

2017 TCGC Cy-Falls HS Show Information
Saturday, February 4
Color Guard Start Time: 10:00AM

Facility Cy-Falls HS
 9811 Huffmeister Rd
 Houston 77095

Ticket Prices: \$8 Spectators

Cash or credit, booster organizations can make checks payable to school.

Please contact the show sponsor PRIOR to the show if you have any questions or have a special circumstance.

Unit Passes: Units receive 3 director badges, wristbands for performers, plus 7 extra wristbands. Director can buy additional wristbands at \$3 each for STUDENTS ONLY. Adults will need to buy full price tickets.

Show Contact Info

Contest Director

Sara Bryant 832-293-8531
 cgqt2005@yahoo.com

Sarah Kelly 713-822-4796

Show Host Contact

Brandi Ball 832-392-6907
 brandi.ball@cfisd.net

Judging Panel

Color Guard

EQ Greg Llacer
MV Charles Brown
DA Tate Fincher
GE Dean Broadbent
GE Brian Kipp Ellis
TP Andre Cooper
LJ Charles Brown

TO LISTEN TO JUDGES

COMMENTARY:

Each director should be set up with an account through CompetitionSuite. This is the ONLY WAY to receive judge's commentary for any TCGC event.

SOUND TESTING:

One hour prior to the start of the contest and during breaks at the discretion of the contest director.

WARM-UP AREA:

All maps are in this packet. Color guards should report one hour prior to performance time. The Show Host will provide sound equipment with auxiliary cords for MP3 or iPod use in both Warm-Up areas no CD capability will be available.

RECAPS: Will be given at the Retreat/ Awards ceremony.

CRITIQUE: There is no critique at this contest.

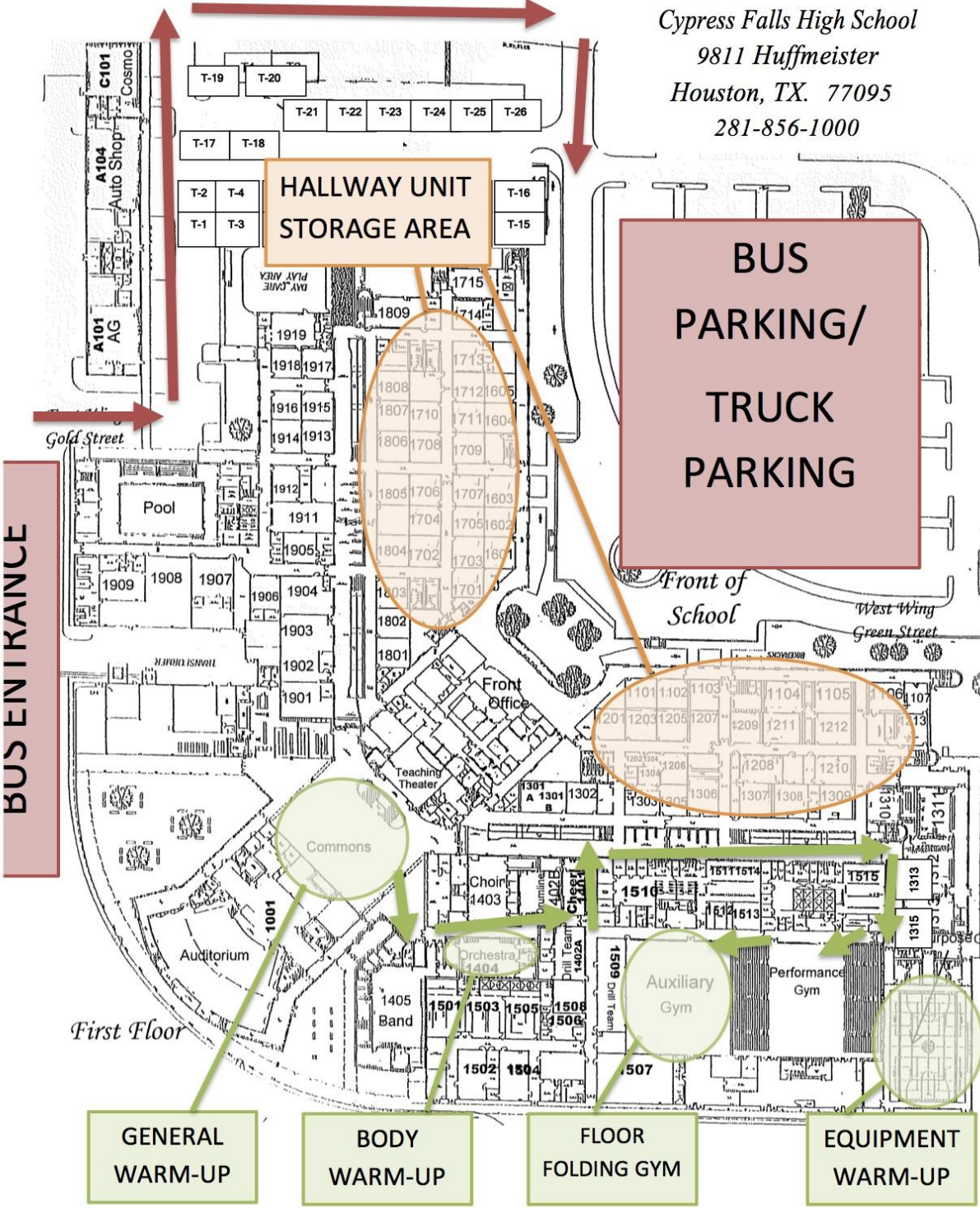
VIDEO TAPING:

Each director can video their own unit using the Director Badge.

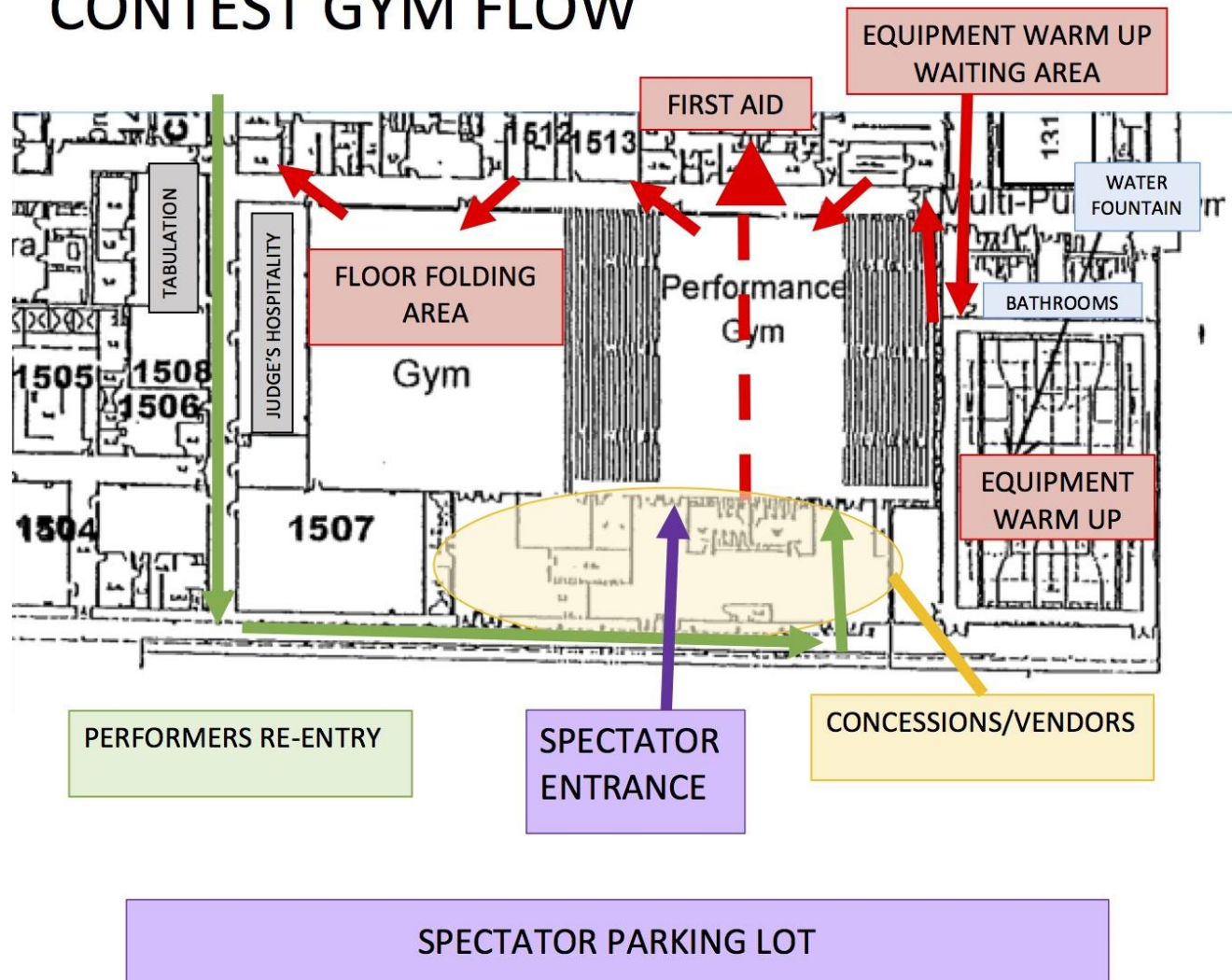
Don't forget to review the [Keys to a Successful Contest Day!](#)



Cypress Falls High School
9811 Huffmeister
Houston, TX. 77095
281-856-1000



CONTEST GYM FLOW





All TCGC contest sites must have a minimum of seventy by one hundred feet (70' x 100') to accommodate a "safety zone" of five (5) feet from any spectator seating. If no spectators are seated on the left and right sides, then the safety zone will be eliminated on the left and right sides of the competition area and extend to the wall.

The "competition area" at this event measures 90' X 60'. All performing groups must prepare to perform within that area. The safety zone at this event will extend into the front and back stands. Floors (tarps) may not extend into the safety zones per rules found in the WGI Adjudication Manual and Rulebook.

