

2017 Canyon HS Show Information
Saturday, February 4
Percussion Start Time: 11:15 AM Color Guard Start Time: 2:00PM

THE SCHEDULE IS TIGHT FOR THIS EVENT...PLEASE STAY WITHIN YOUR INTERVAL TIME

Facility Canyon High School
1510 IH 35 North
New Braunfels, TX 78130

Ticket Prices: \$8 Spectators

Cash or credit, booster organizations can make checks payable to school.

Please contact the show sponsor PRIOR to the show if you have any questions or have a special circumstance.

Unit Passes: Units receive 3 director badges, wristbands for performers, plus 7 extra wristbands. Director can buy additional wristbands at \$3 each for STUDENTS ONLY. Adults will need to buy full price tickets.

Show Contact Info

Contest Director

Jen Simons 512-785-4714
simons.jen@gmail.com

Jason Bush 512-749-6566

Show Host Contact

Amanda Fonner 830-515-6366
Amanda.fonner@comalisd.org

Judging Panel

Color Guard

EQ – Shari Farthing-Brooks
MV – Curtis Uhlemann
DA – Chris Putnam
GE – Kendall LeJuene
GE – Cody Edwards
TP - Kayley Hendricks

TO LISTEN TO JUDGES

COMMENTARY:

Each director should be set up with an account through CompetitionSuite. This is the ONLY WAY to receive judge's commentary for any TCGC event.

SOUND TESTING:

One hour prior to the start of the contest and during breaks at the discretion of the contest director.

WARM-UP AREA:

All maps are in this packet. Color guards should report one hour prior to performance time. The Show Host will provide sound equipment with auxiliary cords for MP3 or iPod use in both Warm-Up areas no CD capability will be available.

RECAPS: Will be given at the Retreat/Awards ceremony. No scores will be announced, only placements.

CRITIQUE: Only percussion critique. Units must sign-up at the sound table.

VIDEO TAPING:

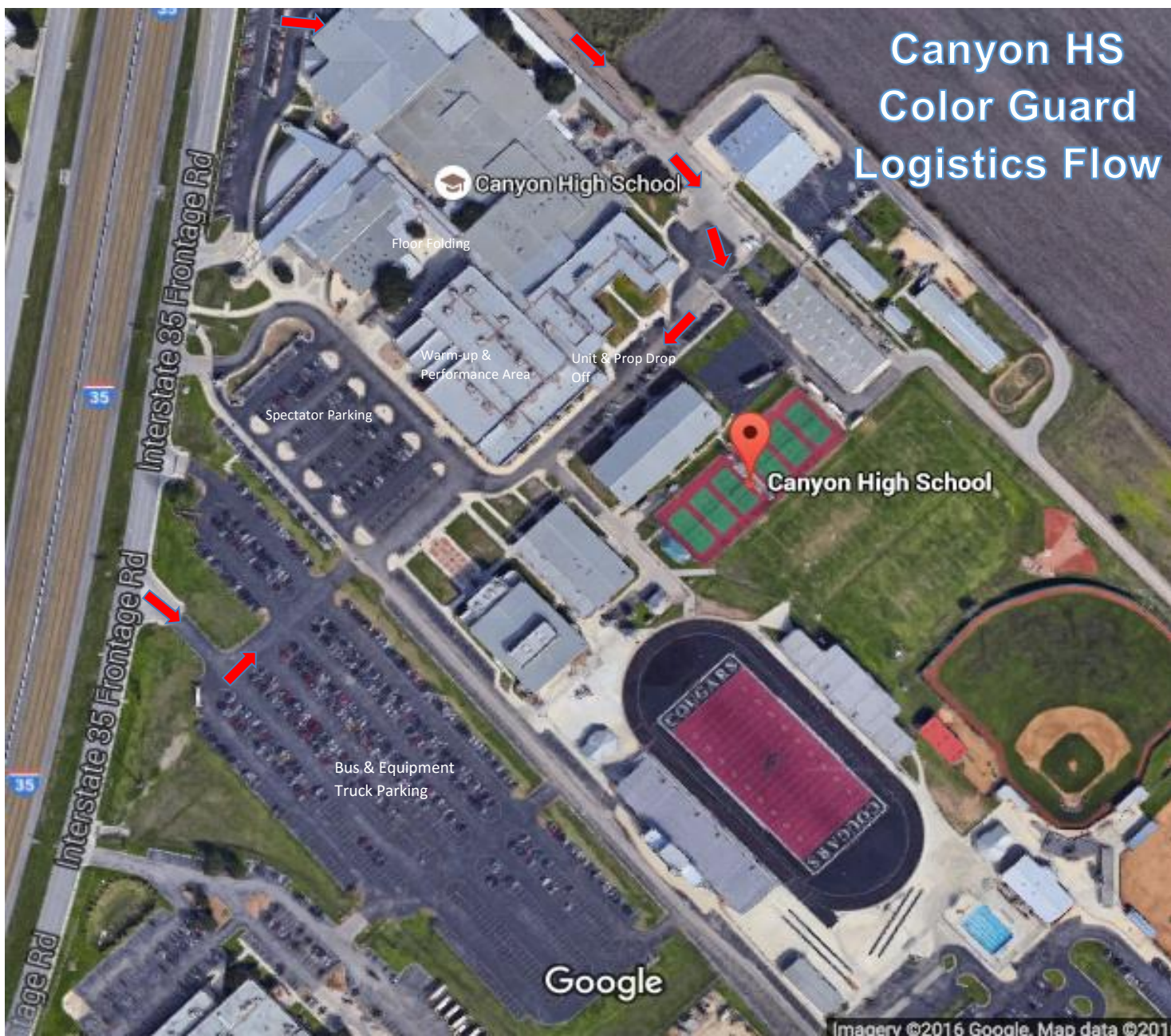
Each director can video their own unit using the Director Badge.

Don't forget to review the [Keys to a Successful Contest Day!](#)

Percussion

MU – Ben Maughmer
EffMU – Daniel Montoya
EffVis – Gino Hernandez
Vis – Johnathan Yoo
TP - Kayley Hendricks

Canyon HS Color Guard Logistics Flow



Google

Imagery ©2016 Google. Map data ©2011

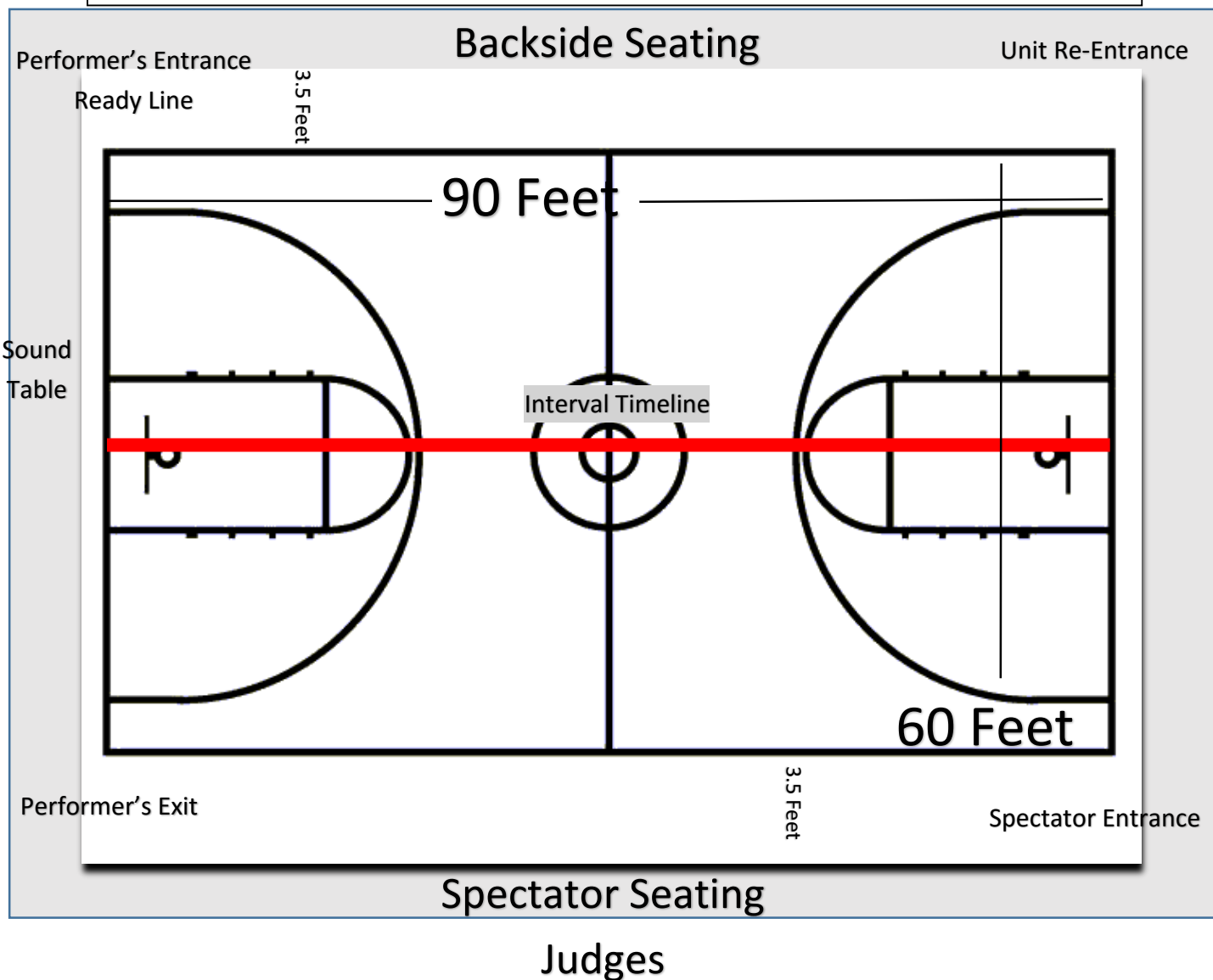
Canyon HS Percussion Logistics Flow





All TCGC contest sites must have a minimum of seventy by one hundred feet (70' x 100') to accommodate a "safety zone" of five (5) feet from any spectator seating. If no spectators are seated on the left and right sides, then the safety zone will be eliminated on the left and right sides of the competition area and extend to the wall.

The "competition area" at this event measures 90' X 60'. All performing groups must prepare to perform within that area. The safety zone at this event will extend into the front and back stands. Floors (tarps) may not extend into the safety zones per rules found in the WGI Adjudication Manual and Rulebook.



Check-In/Drop-Off Procedures

Performer/Prop Drop-Off will be located near the Grand Canyon Hallway. Busses may drop members off then continue to upper parking lot to park in designated area. Check-in table will be located inside the door labeled Unit Check-In to the right of the Grand Canyon Hallway. A Check-in Representative will be there to ensure that all equipment is properly taped according to TCGC and WGI rulebook specifications. Units will be escorted to their designated area in School. Props will be unloaded into the Grand Canyon Hallway to the left of the Unit Check-in location.

Performing Members, Crew and Staff Admission

Performing members and crewmembers will need to check in at the "check in" table prior to warm up. Admission will be given to directors, all performers, and up to 7 student crewmembers.

Props and Floors may be brought in through the Grand Canyon Hallway located between the main building and the music building and stored in the Grand Canyon Hallway. Props need to be against the wall and must not block traffic flow. Concessions will be available. **Outside food or drink will not be allowed inside the school.**

The Cougar Café as well as the Grand Canyon Hallway are traffic areas only. Students and Staff will not spin, maneuver, or toss equipment inside.

Warm-Ups

Body Warm-up will be in the Dance Studio. Students may stretch or do a body type of run through.

Equipment Warm-up will be in the Practice Gym.

Official Warm Up Time

Inside Warm-Up and Performance Notes

If you will be utilizing the inside warm-up time please meet your monitor at the check-in table 5 minutes prior to your "Ready" time. Your group will be led from the check-in area to the warm up gym and be placed in holding until their warm-up time starts. After your inside warm-up, your group will be led to the performance area. You will be placed in holding until your official set up and performance time starts.

If you will NOT be utilizing the inside warm-up time please meet your monitor at the check-in table 5 minutes prior to your "Holding" time. Your group will be led from the check-in area directly to the performance gym and be placed in holding until their official set up and performance time begins.